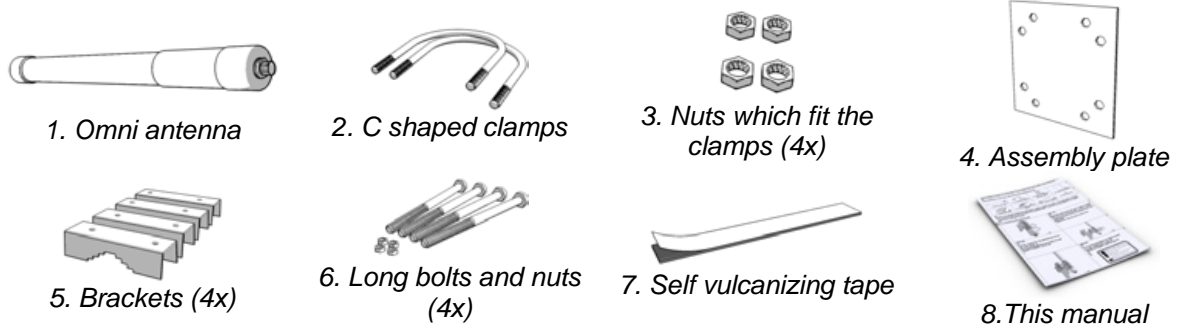


# Instruction manual omni antenna

With the purchase of this antenna you've got a reliable amplifier for your sender/receiver setup. Without any noise this antenna amplifies for receiving as for sending. Because of transportation this antenna will be supplied in several parts. For assembling only wrench size 10mm is needed.

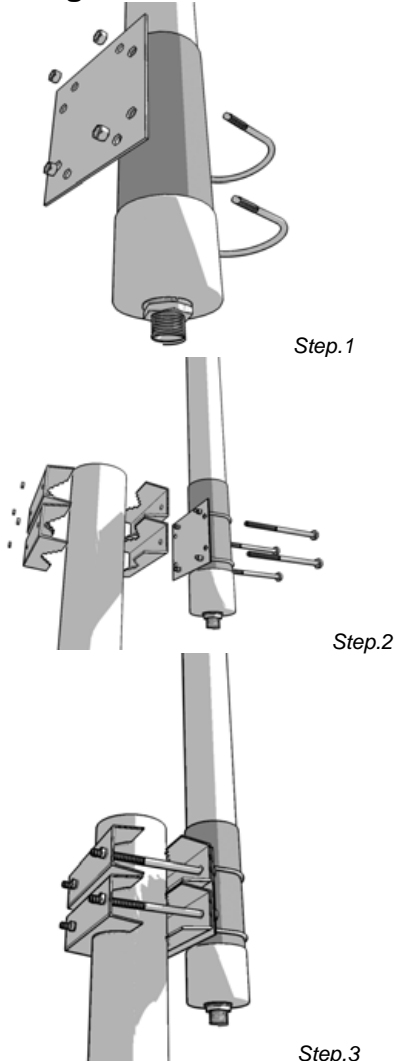
The antenna consists out of the following parts:



## Before you start

Before you start assembling the antenna it's advisable to attach the cable to the antenna first. Now it's easy to protect the connection with self vulcanizing tape (7). This is very important for the long life span of the antenna set up.

## Assembling the antenna



### Step 1

Mount the antenna with the two C-clamps(2) and nuts (3) to the Assembly plate (4). The C-clamps should be placed over the metal part of the omni antenna.

Tighten the nuts with wrench size 10.

### Step 2

Put the 4 long bolts through the holes in the assembly plate.

Mount the antenna with the bolts and brackets to a tube or pole.

### Step 3

Position the antenna on the highest point possible on the pole or tube.

Tighten the brackets with the nuts.



*Metal or other objects can influence the omni antenna negatively.  
A high position free of obstacles gives optimal performance*